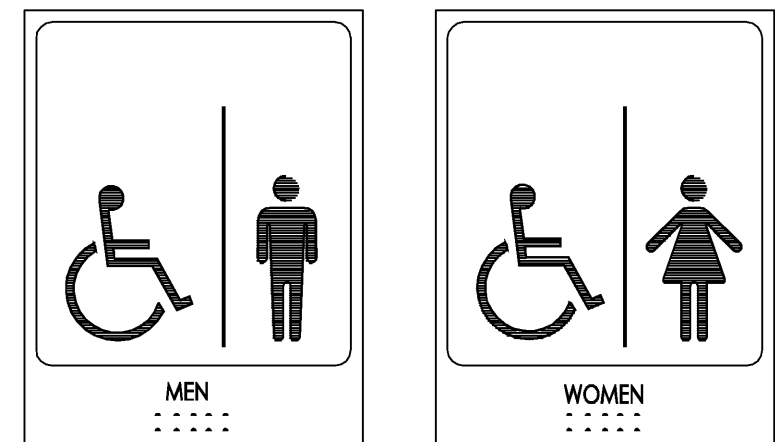


DOOR MOUNTED ACCESSIBILITY SIGNAGE

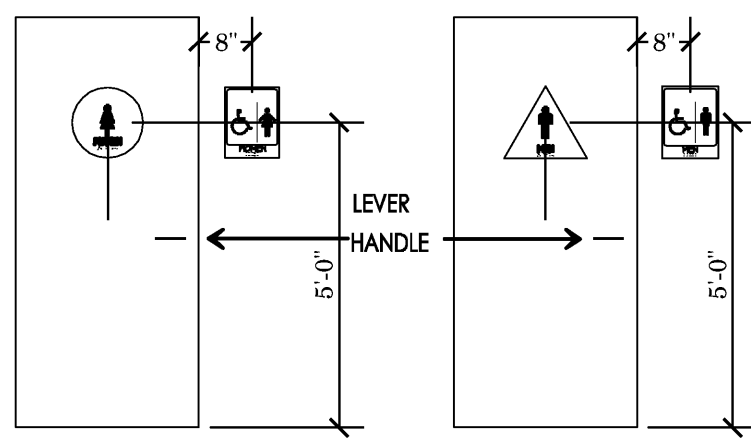
ALL SIGNAGE SHALL CONFORM WITH ADA ACCESSIBILITY GUIDELINES

- LETTERS & NUMBERS MUST BE RAISED 1/32" FROM SIGN SURFACE
- CHARACTER HEIGHT MUST BE AT LEAST 5/8" BUT NOT EXCEED 2"
- TYPE STYLE FOR LETTERS AND NUMBERS SHALL BE SANS SERIF OR SIMPLE SERIF
- PICTOGRAMS SHALL BE ACCOMPANIED BY THE EQUIVALENT VERBAL DESCRIPTION PLACED DIRECTLY BELOW PICTOGRAM

PLASTIC LAMINATE SECURED TO CENTER OF DOOR FACE, 60" A.F.F. (WOMEN SYMBOL) 1/4" THICK 1/2" DIA. (MENS SYMBOL) 1/4" THICK TRIANGLE 12" SIDES COLOR AND CONTRAST SHALL BE DISTINCTLY DIFFERENT FROM COLOR AND CONTRAST OF THE DOOR USE NEMA RATING SELF-EXTINGUISHING ADHESIVE TO MOUNT



WALL MOUNTED ACCESSIBILITY SIGNAGE



GENERAL NOTES

TO LEFT
REFER TO PLUMBING DRAWINGS

GRAB BARS

1 1/2" DIA. STAINLESS STEEL, SPACE BETWEEN WALL AND GRAB BAR 1 1/2"; BARS MAY NOT ROTATE

ACCESSORIES

THE FOLLOWING TOILET ROOM ACCESSORIES ARE FURNISHED BY OWNER AND INSTALLED BY G.C. ALL OPERABLE PARTS TO BE 40" MAX. A.F.F. TO WEL SOAP DISPENSERS SHALL BE MOUNTED NO HIGHER THAN 40" A.F.F. REFER TO DETAIL (2) (F5)

- SANITARY NAPKIN DISPOSAL UNIT
- PAPER TOWEL DISPENSER
- SOAP DISPENSER
- TOILET SEAT DISPENSER
- TOILET SEAT COVER DISPENSER

LAVATORY

REFER TO PLUMBING DRAWINGS

RECEPTACLE OUTLETS

ALL RECEPTACLE OUTLETS SHALL BE CENTERED NOT LESS THAN 15" A.F.F. SWITCHES, CONTROLS, ETC. USED TO OPERATE LIGHTS, HEATING/COOLING/VENTILATION EQUIP. SHALL BE CENTERED NOT LESS THAN 36" AND NO MORE THAN 48" A.F.F.

FLOOR

WATER PROOF MEMBRANE UNDER FLOOR FINISH TO 6" AFF

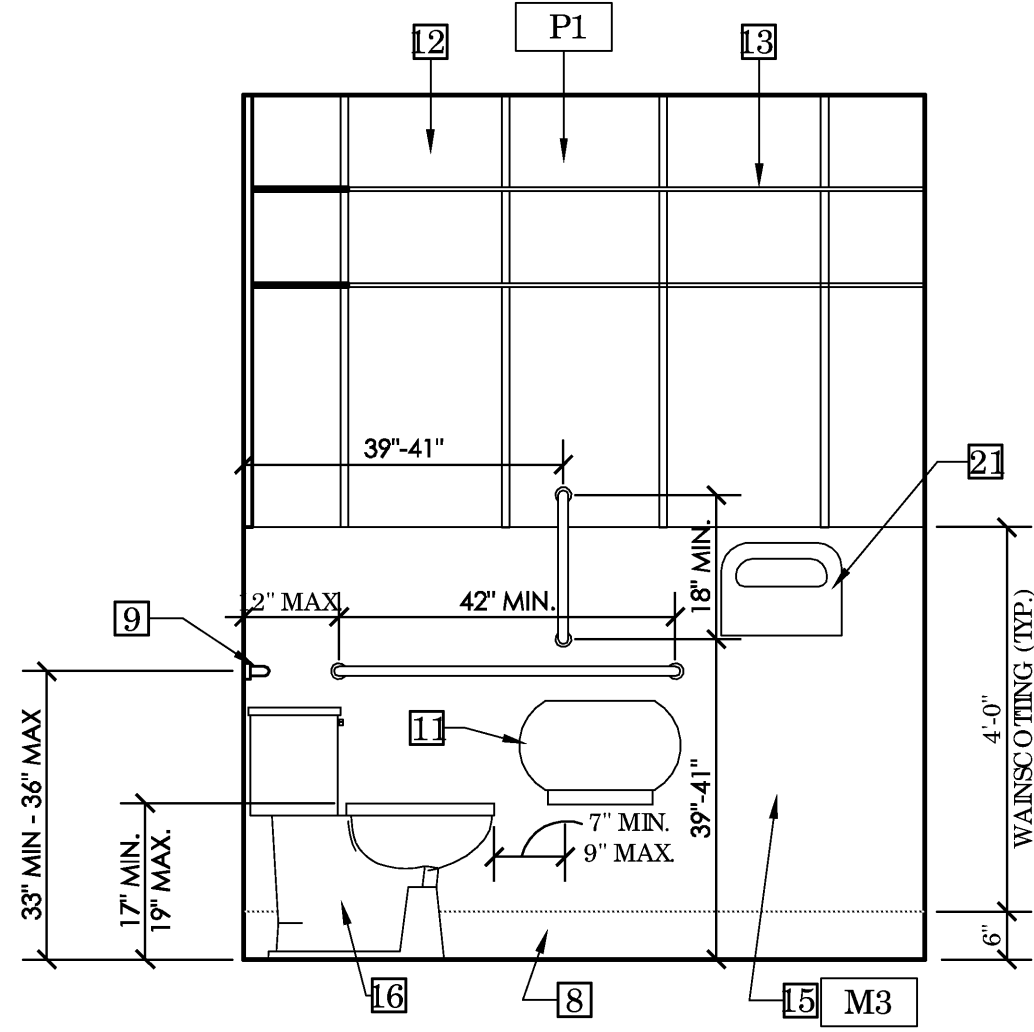
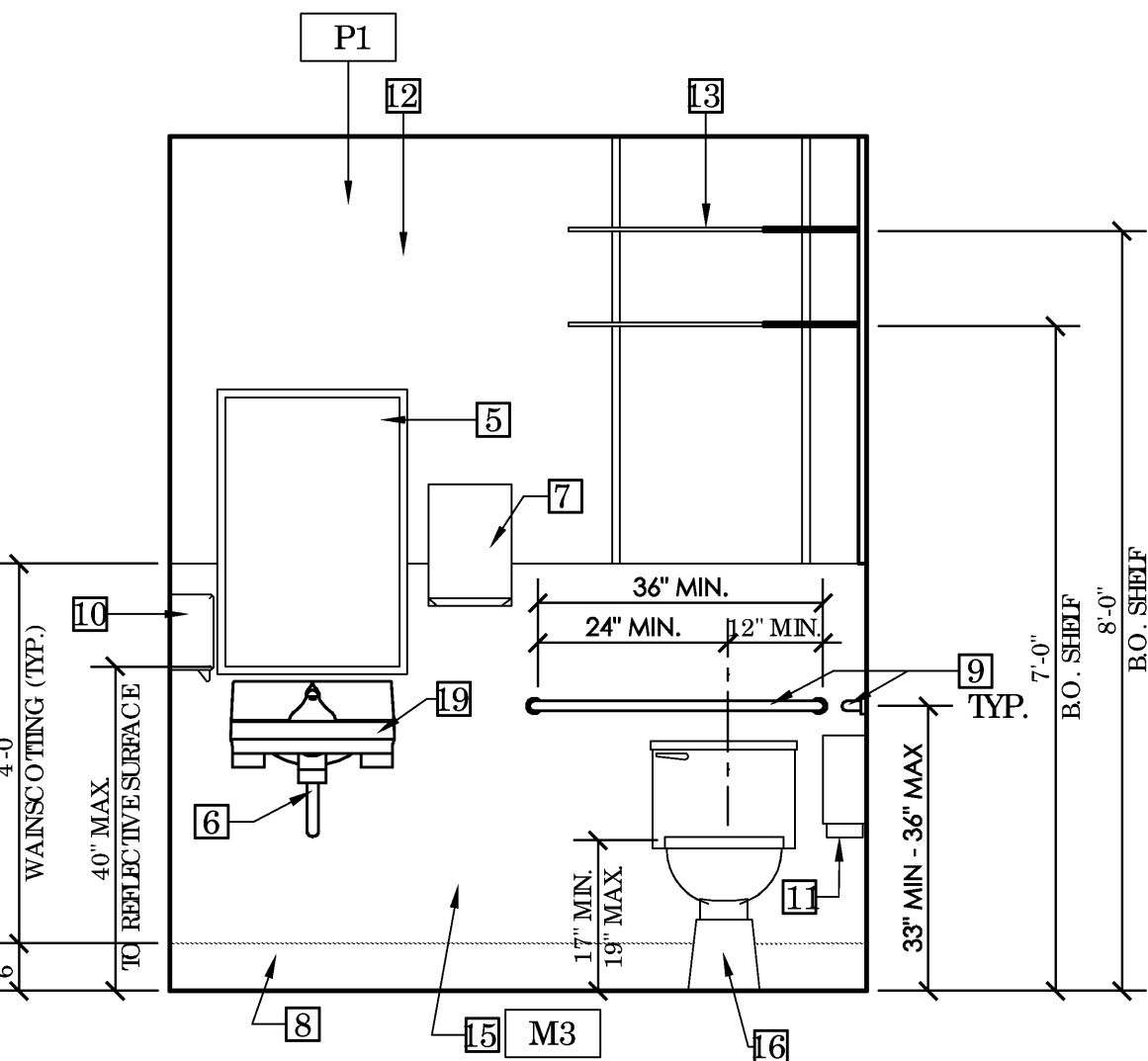
RESTROOM KEY NOTES

- RESTROOM SIGNAGE ON LATCH SIDE OF DOOR, BRAILLE SIGNAGE (WHERE REQUIRED) BY CODE, REFER TO DETAIL (6)
- DOOR PER DOOR SCHEDULE
- LIGHT AND FAN SWITCH - G.C. TO VERIFY MOUNTING HEIGHT PER ADA REQUIREMENTS. SEE ELECTRICAL DRAWINGS
- NOT USED.
- (N) MIRROR (MAX. 40" AFF. TO TOP OF MIRROR AT 74" MIN. AFF.) ALL MIRRORS SHALL BE SAFELY GLAZED TO CONFORM AND PASS THE TESTING REQUIREMENTS OF THE CONSUMER PRODUCT SAFETY COMMISSION SPECIFICATION 429.428.
- (N) INSULATE PIPES AS REQUIRED PER CODE. MAINTAIN REQUIRED 24" HT. CLR.
- (N) PAPER TOWEL DISPENSER
- CERAMIC TILE FLOORING TO 6" AFF. TYP. REFER TO DETAIL (7) (A4.0)
- (N) GRAB BARS, G.C. TO ENSURE TO MEET ADA CLEARANCES REQUIRED.
- (N) SOAP DISPENSER
- (N) TOILET SEAT DISPENSER
- PAINTED FINISH ON 5/8" GYPSUM BOARD (GREEN BOARD), TYP. (PRIMER THREE COATS OF PAINT TYP.)
- G.C. SHALL PROVIDE SURFACE MOUNTED STANDARDS WITH WHITE MELAMINE SHELVES MOUNTED ABOVE TOILET IN RESTROOMS. 10 WEST SIDE AT 7'-0" AFF. SHELVING REQUIRED EVERY 8' RESTROOM IS EXISTING.
- NOT USED.
- (N) 48" HIGH FIBER-REINFORCED PLASTIC (FRP) W/ WHITE TRIM CAP REFER TO DETAIL (8)
- (N) WATER CLOSET. SEE PLUMBING DRAWINGS FOR DETAILS
- 5' REQUIRED CLEAR TURNING DIAMETER
- NOT USED.
- (N) LAVATORY, SEE PLUMBING DRAWINGS FOR DETAILS
- (N) SANITARY NAPKIN DISPOSAL UNIT
- (N) TOILET SEAT COVER DISPENSER

1 ENLARGED RESTROOM PLAN

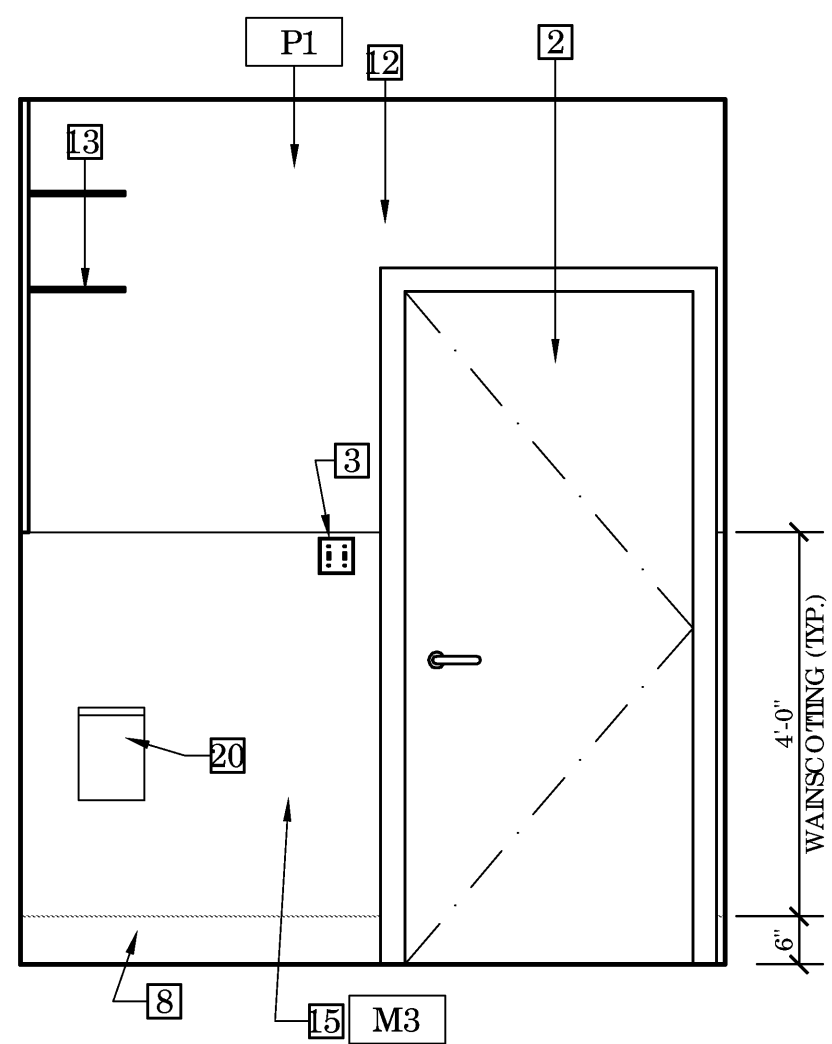
PLAN

SCALE 3/4" = 1'-0"



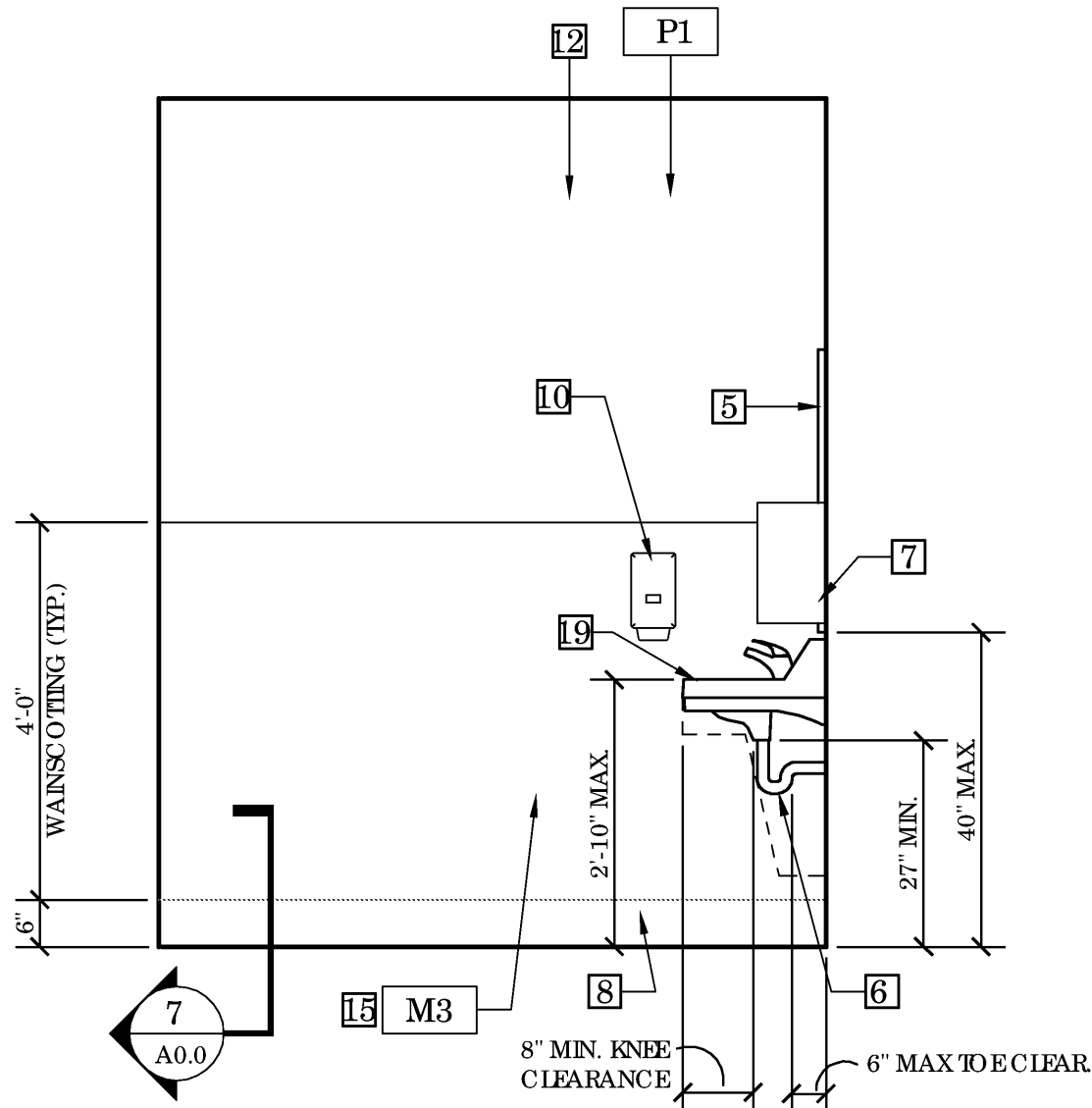
2 RESTROOM ELEVATION

SCALE 1/2" = 1'-0"



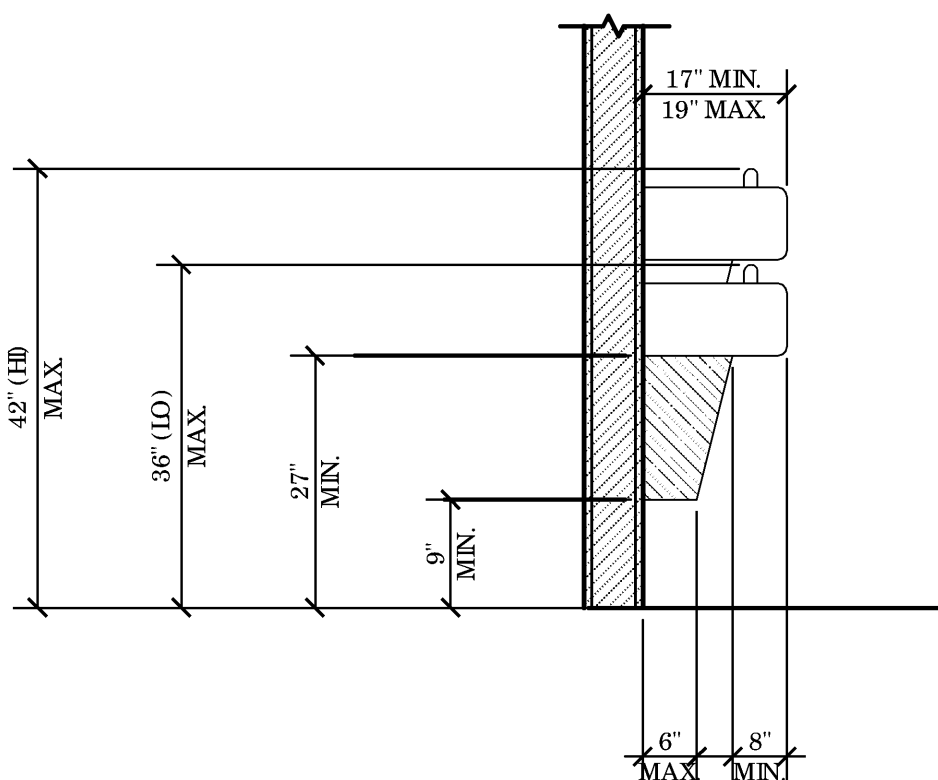
3 RESTROOM ELEVATION

SCALE 1/2" = 1'-0"



7 FRP DETAIL

FULL SCALE



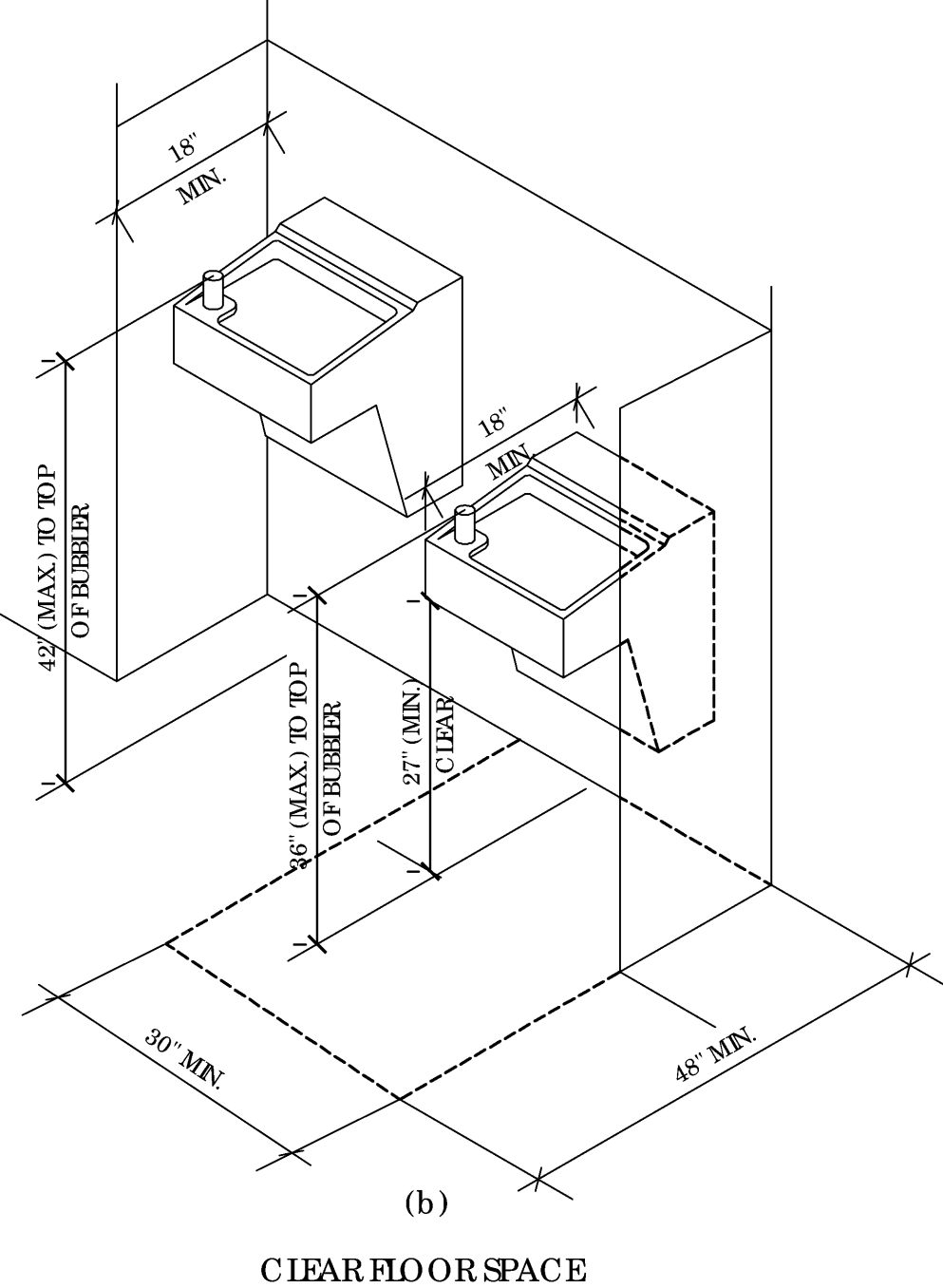
NOTE: EQUIPMENT PERMITTED IN SHADED AREA

(a)
SPOUT HEIGHT AND KNEE CLEARANCE

8 ELEVATION AT WAINSCOT

DETAIL

SCALE 3/4" = 1'-0"



4 RESTROOM ELEVATION

SCALE 1/2" = 1'-0"

5 RESTROOM ELEVATION

SCALE 1/2" = 1'-0"

9 DRINKING FOUNTAIN CLEARANCES

DETAIL

SCALE NTS

FREDERICK J. GOGGIA
ARCHITECT, NO. AB. FDI
1850 GRAY ROAD, SUITE 300
ST. LOUIS, MO 63146
PH: (314) 415-2400 FAX: (314) 415-2300
www.fjg.com

charlotte
russe

UNIVERSITY TOWN CENTER
140 UNIVERSITY TOWN CENTER DRIVE - SUITE #20
SAPASOTA, FL 34243
SPACE # 210 STORE # 786

REV	DATE	DESCRIPTION	NAME
1	07/26/14	ISSUE TO PERMIT	
2	10/06/14	ISSUE TO BID	
3		ELITE CONSTRUCTION GROUP	
4		PHONE: 727-282-0072	
5		REDUCED BY 10 PERCENT - SCALE	
6		WILL BE IN PERCENT OF ORIGINALS	
7	07/26/14	ISSUE DATE	

A4.3

ENLARGED RESTROOM PLAN + ELEV.